

# MET Professional Academy HIGH SCHOOL **REDEFINED**

Be part of an innovative program  
where you *fast-forward* into your future.

Tap into your passion and find a way to be the change. At the MET, students are free to work collaboratively as they are fully immersed in a professional culture, solving real-world problems, using industry-standard tools, and working alongside industry experts as mentors.

## MEDICAL STRAND



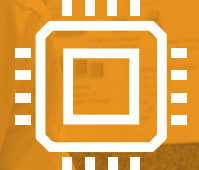
Explore a variety of healthcare fields through college level coursework, shadowing opportunities, projects and internships.

## ENGINEERING STRAND



Combine engineering, entrepreneurship and innovation. Learn through hands-on, active learning opportunities in projects sponsored by business partners.

## TECHNOLOGY STRAND



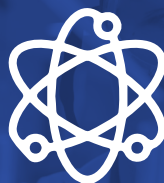
Immerse yourself in a professional environment where technology is utilized to design products and solve problems.

## GLOBAL BUSINESS STRAND



Students will work on projects with business partners in the community to develop their professional, project management and strategic skills.

## BIOSCIENCE STRAND



Experience the intersection of biology and technology through scientific inquiry and project-based learning.



**capsnetwork**  
collaborate · innovate · educate

**PEORIA**  
UNIFIED SCHOOL DISTRICT

All MET course offerings are two class periods each day so that students can become immersed in collaborative work with peers and business partners.

<b>COURSE NAME</b>	<b>PEORIA UNIFIED CREDITS</b>
--------------------	-------------------------------

<b>MET Medical Foundations I/II Honors</b> (3.0 minimum GPA. Students qualify for the STEM tuition waiver if they have a 3.25 GPA or higher.)	4 honors credits 8 possible dual enrollment credits through Grand Canyon University* MET Medical Foundations II students can earn advanced biology lab credit
<b>MET Medical Applications I/II Honors</b> (3.25 minimum GPA)	4 honors credits 8 dual enrollment credits through Grand Canyon University*
<b>MET Engineering I/II Honors</b> Design Thinking	4 honors credits MET Engineering II students can earn physics lab credit
<b>MET Engineering III/IV Honors</b> Innovative Design	4 honors credits FSE 100 Introduction to Engineering through ASU
<b>MET Cybersecurity &amp; IT Networking Honors</b> Cisco, Ethics, Linux & Windows	4 honors credits 13 dual enrollment credits through Glendale Community College
<b>MET Cybersecurity Capstone Honors</b>	4 honors credits
<b>MET Bioscience &amp; Innovations Honors</b> (3.0 minimum GPA)	2 honors credits MET Bioscience students can earn advanced biology lab credit
<b>MET Bioscience Research Honors</b> (3.0 minimum GPA)	2 honors credits
<b>MET Global Business I/II H</b>	4 honors credits

\*Students will receive the GCU STEM tuition waiver with a minimum 3.25 GPA for MET medical courses

\*\*All MET courses are honors courses and are all year-long